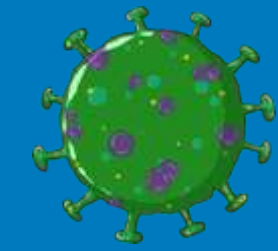
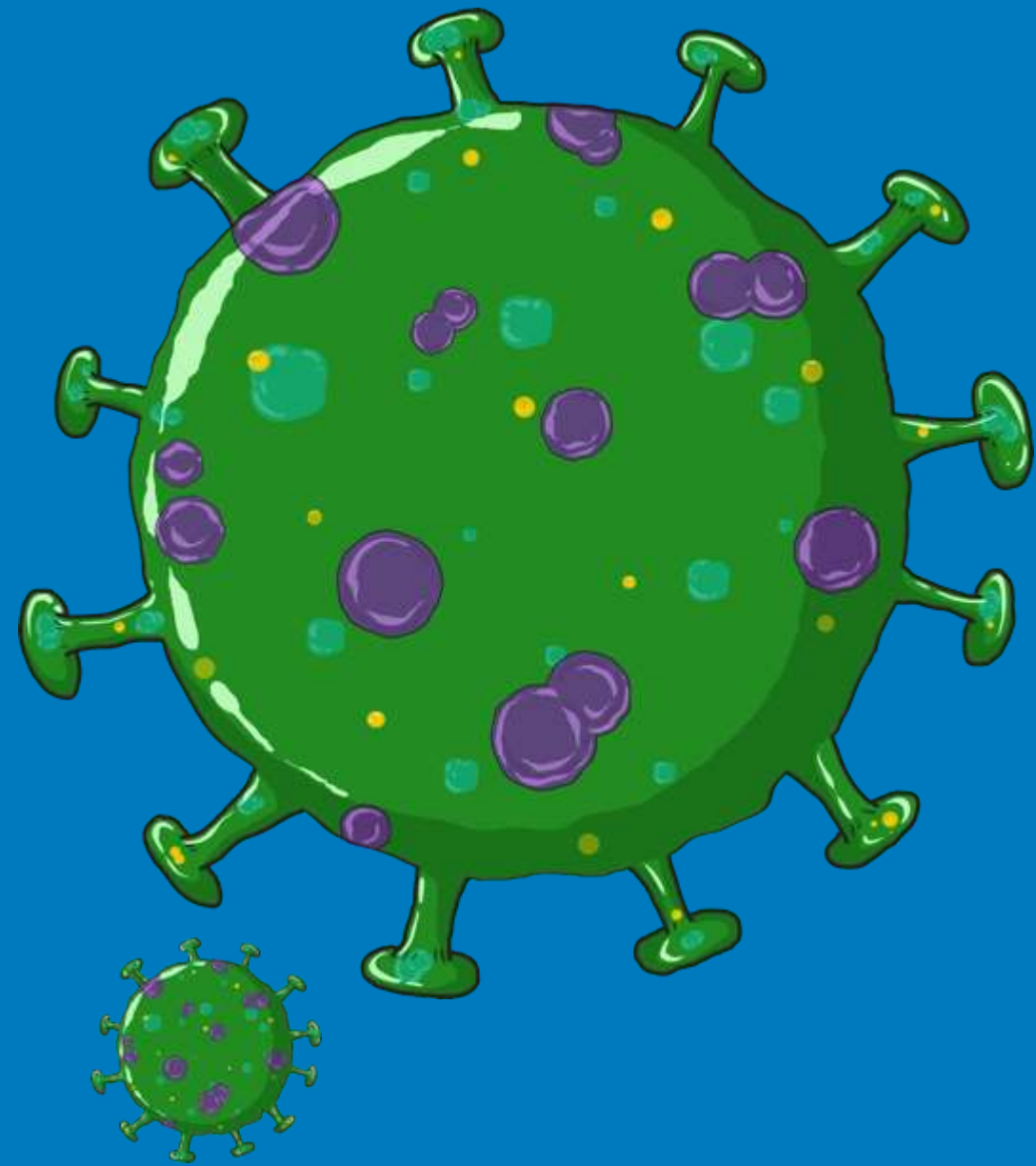




Ministry of Health & Family Welfare
Government of India



COVID-19

CURRENT SITUATION





SESSION 1

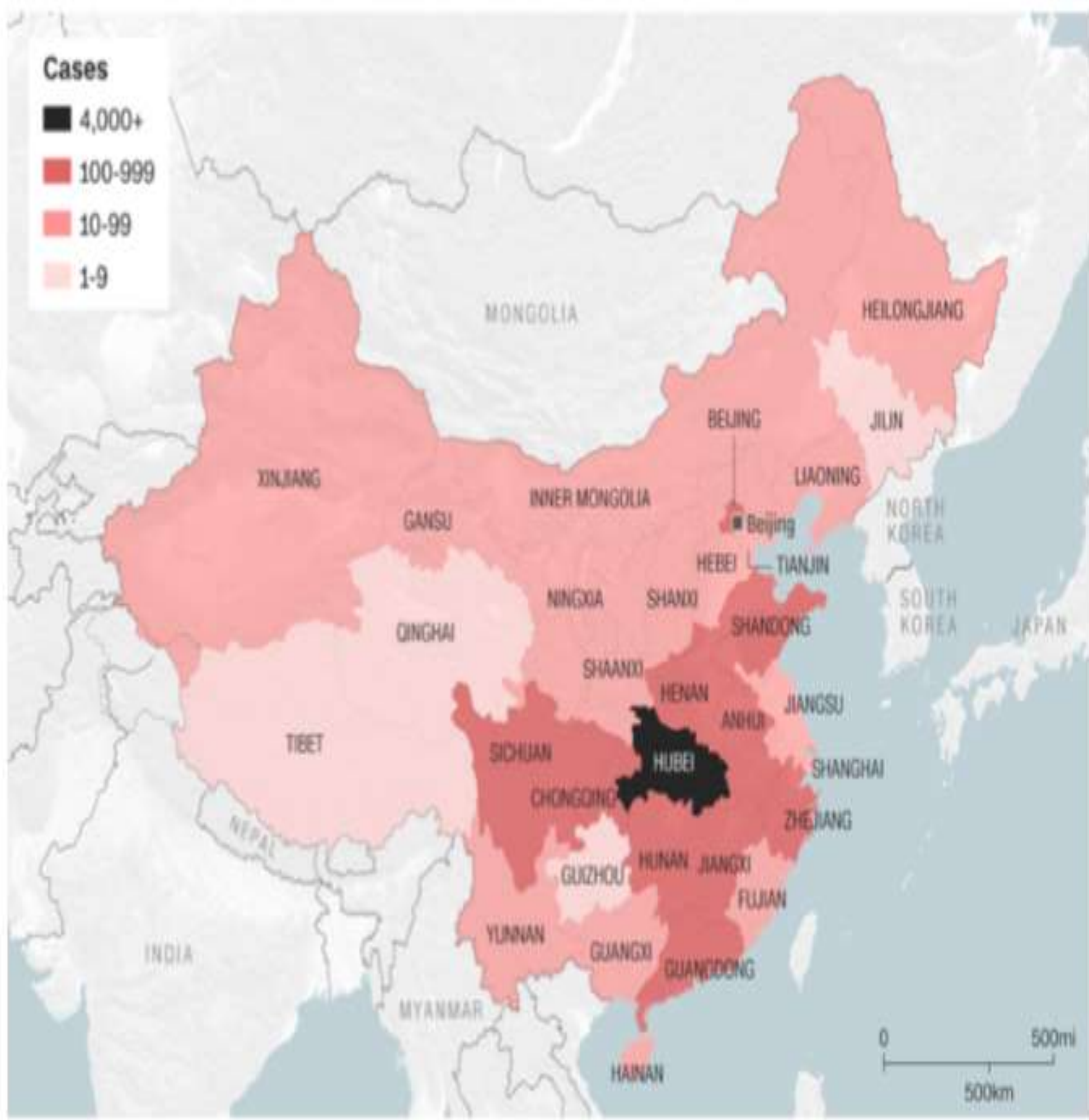
Current Situation

covers almost all countries of the world

WHO declared outbreak of novel corona virus (COVID-19 as a Pandaemic situation in International Health Regulations (2005) Emergency Committee Geneva, 30th January 2020

COVID-19 stands for Corona Virus Disease identified in year 2019

Spread of the Wuhan coronavirus in China



Source: National Health Commission of the PRC
Graphic: Natalie Leung and Henrik Pettersson, CNN
Data correct as of January 29 ET

Image from Wikipedia

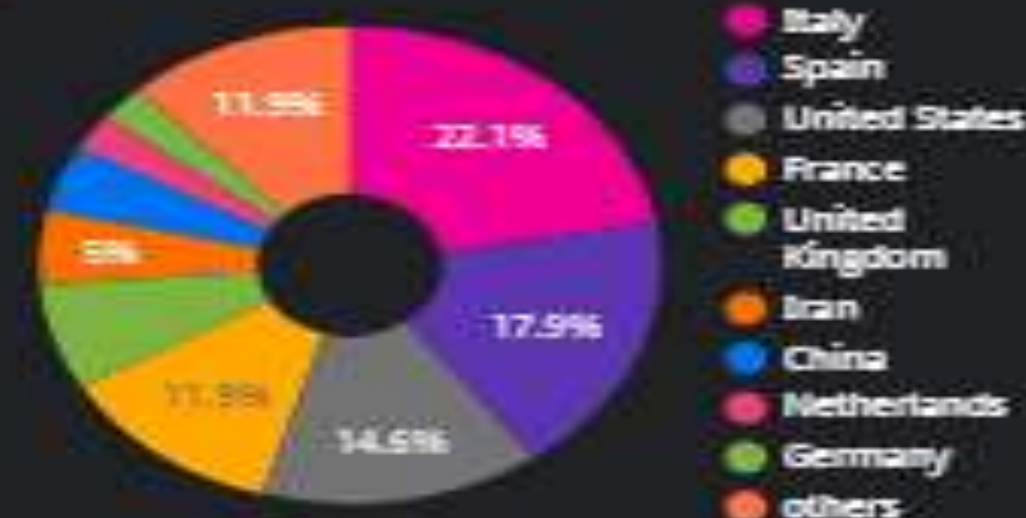
Country

PANDEMIC SPREAD
210/241
COUNTRIES & TERRITORIES

COVID-19 CASES



COVID -19 RELATED DEATHS



CASES PER MILLION POPULATION
452.1

Click on each country to know the status



TOTAL COVID-19 CASES	TOTAL RECOVERED	PROPORTION OF TOTAL RECOVERED
1,346,262	278,079	20.66

TOTAL SERIOUS CASES	PROPORTION OF SERIOUS CASES
47,239	2.15

TOTAL COVID-19 RELATED DEATHS	FATALITY RATE
74,691	3.7

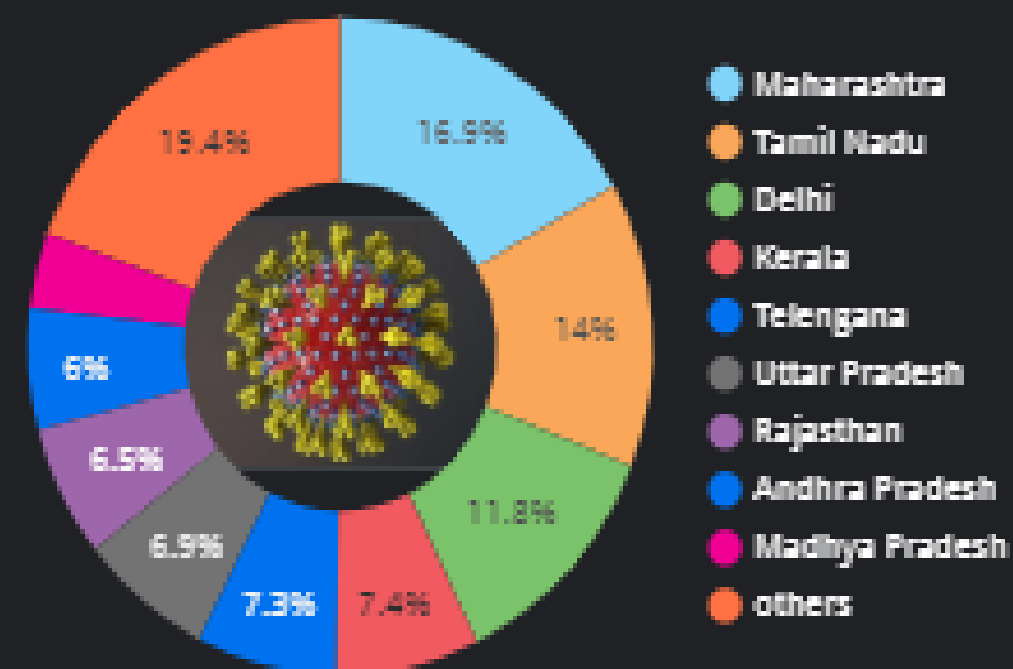
SOURCE: Novel Coronavirus (COVID-19) Situation WHO.
www.worldometers.info/coronavirus/

Indian States ...	Reported Cases ...	Recovered	Deaths
Maharashtra	748	56	45
Tamil Nadu	621	8	5
Delhi	523	19	7
Kerala	327	58	2
Telangana	321	34	7
Uttar Pradesh	305	21	3
Rajasthan	288	21	3
Andhra Pradesh	266	1	3
Madhya Pradesh	165	0	9
Karnataka	151	12	4
Gujarat	144	22	12
Jammu and Kashmir	109	4	2
West Bengal	91	13	3
Haryana	90	25	1
Punjab	76	4	6
Bihar	32	0	1
Uttarakhand	31	5	0
Assam	26	0	0
Odisha	21	2	0
Chandigarh	18	0	0
Ladakh	14	10	0
Himachal Pradesh	13	2	1
Chhattisgarh	10	8	0
Andaman and Nicob...	10	0	0
Goa	7	0	0
Puducherry	5	1	0
Jharkhand	4	0	0
Manipur	2	0	0

TOTAL CASES
4,421

DEATHS
114

RECOVERED/CURED
326



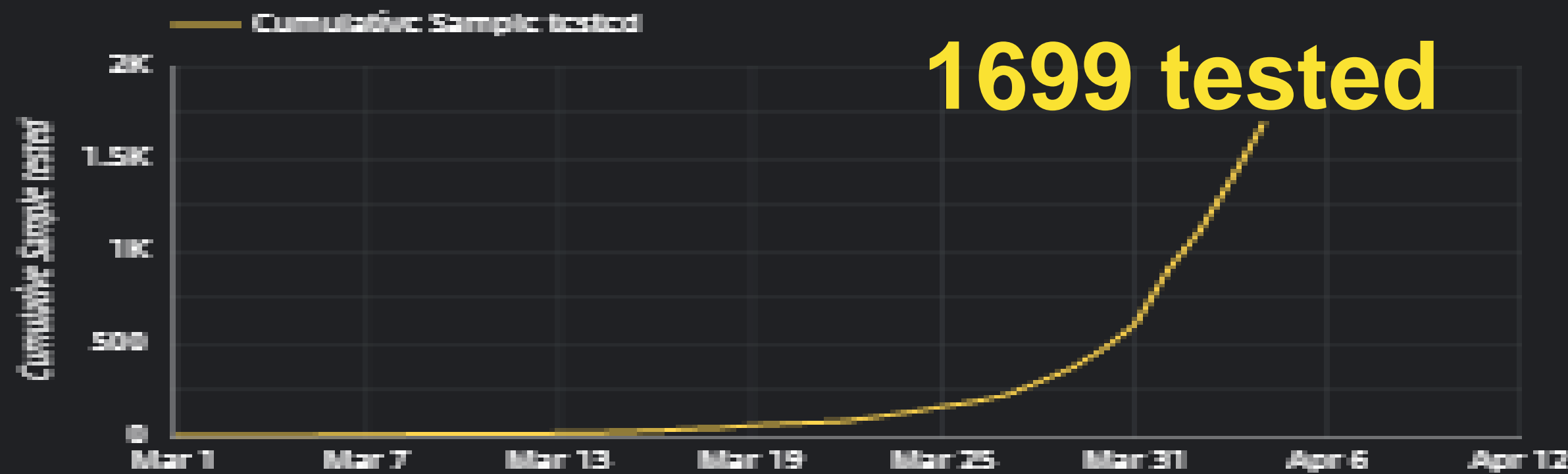
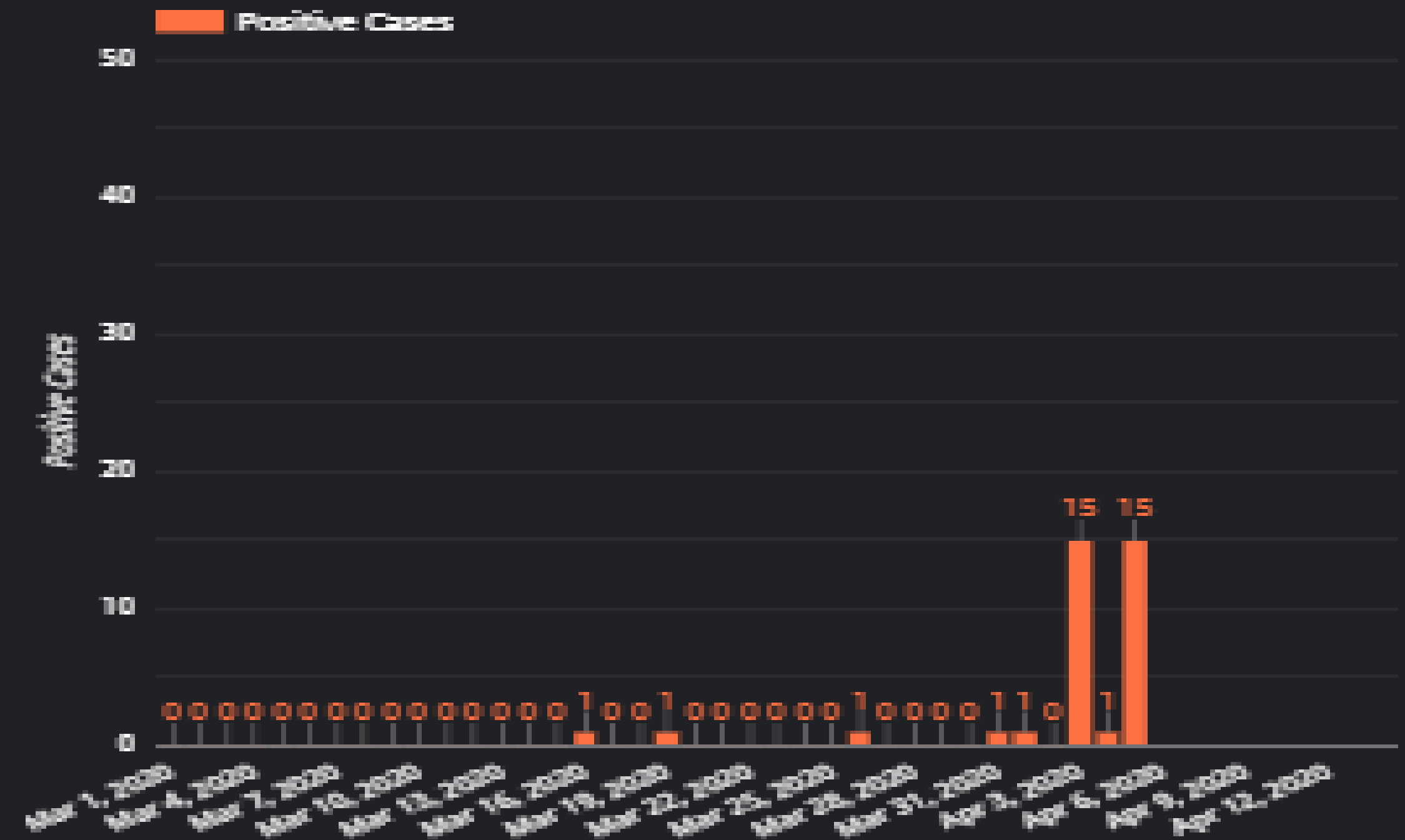
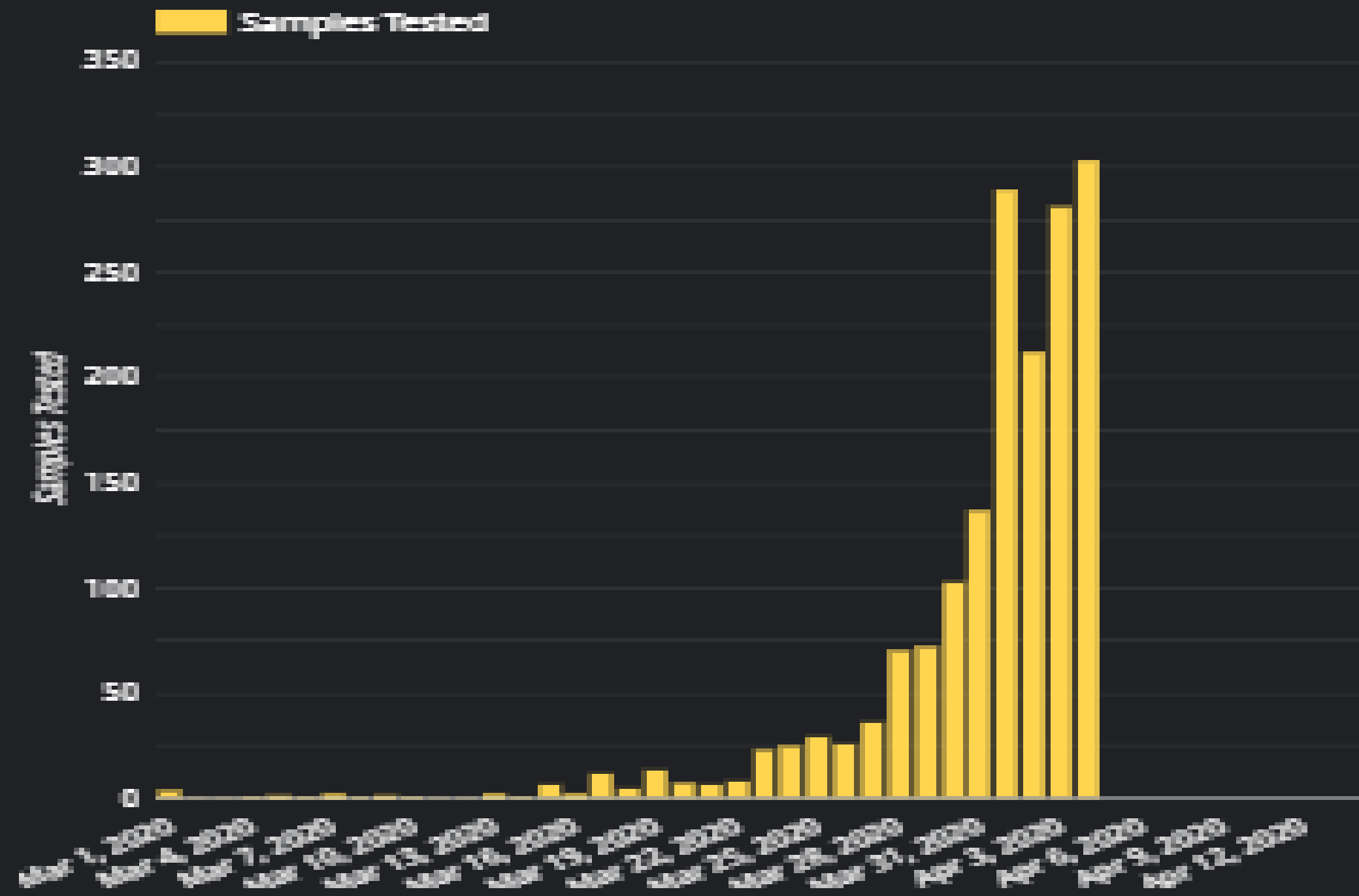
ON 37 TH DAY INDIA 4,421

OTHER COUNTRIES WERE

USA	GERMANY	FRANCE	SPAIN
85,435	43,938	32,964	65,719
UNITED KINGDOM	IRAN	ITALY	
11,658	29,406	59,138	



ODISHA COVID 19 STATUS



Ministry of Health & Family Welfare
Government of India



Coronavirus – Transmissibility

- Infected droplets
 - $>5\mu\text{m}$, travel $<1\text{m}$
- Aerosols
 - $<5\mu\text{m}$, travel $>1\text{m}$
- Contact
 - Hands, surfaces

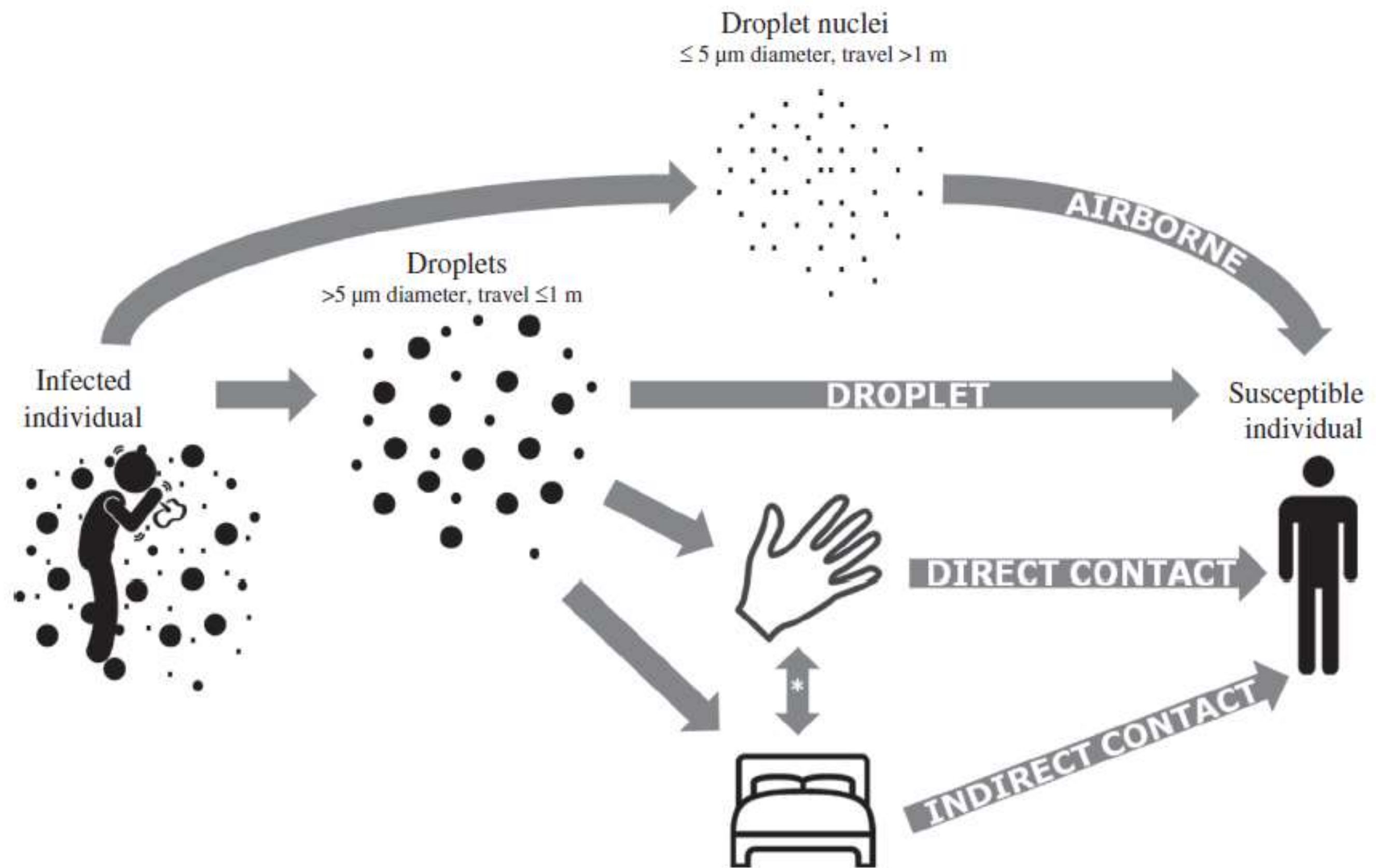


Figure 1. Transmission routes: droplet, airborne, direct contact, and indirect contact. (Indirect contact: routes involving a combination of hand and surface.) Definitions of 'droplet' and 'droplet nuclei' are from Atkinson *et al.*⁵

Coronavirus – Transmissibility

**WITHIN
HUMAN**

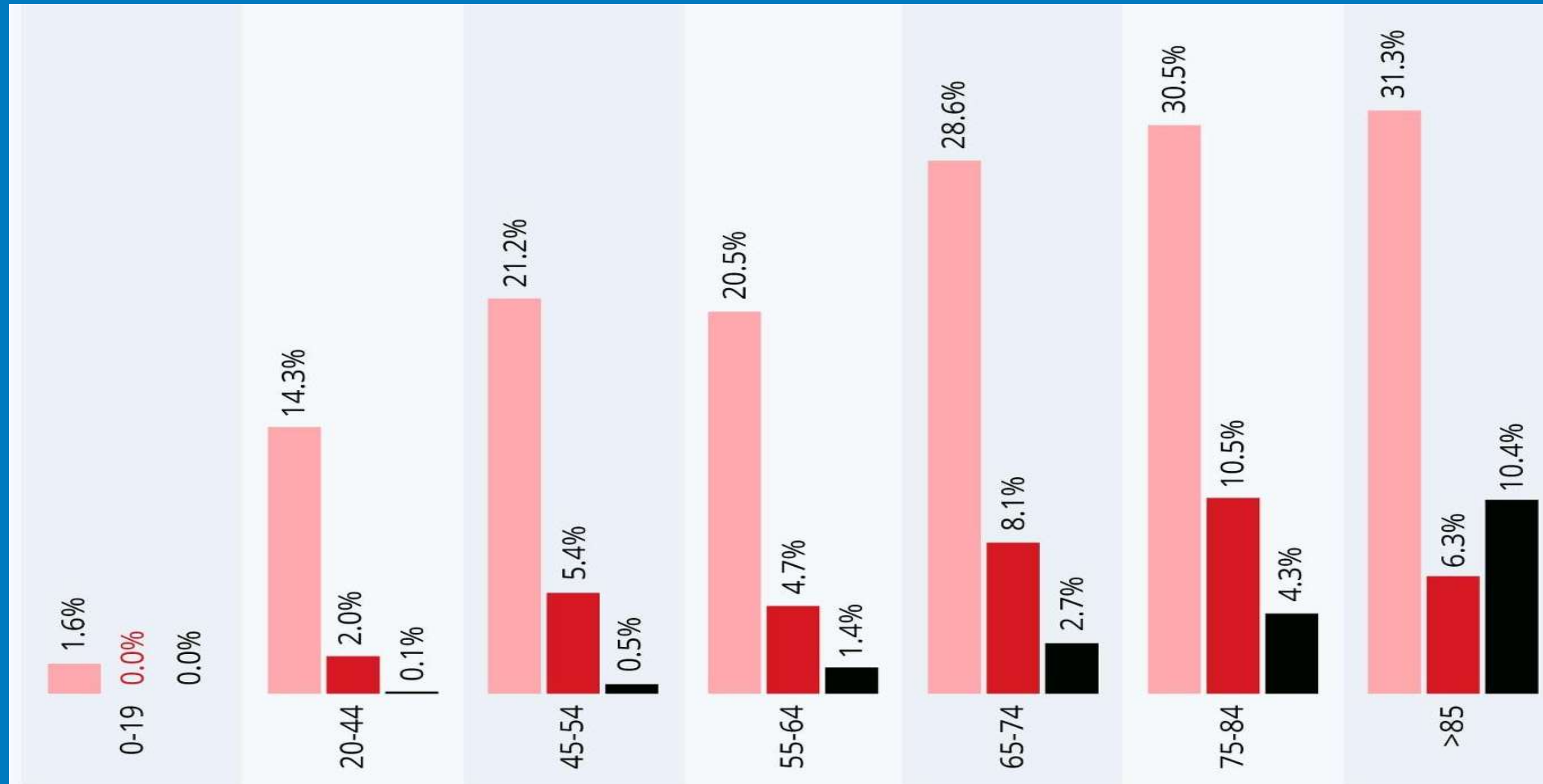
Incubation period:

Current estimates of the incubation period of SARS-CoV-2 range from 2-14 days.

**OUTSIDE
HUMAN**



Susceptibility by age



How COVID-19 Affects Different U.S. Age Groups

Hospitalization, ICU admission and fatality rates for reported U.S. COVID-19 cases by age group*

■ Hospitalization ■ ICU admission ■ Case fatality

Affects any age , but fatality is more in older above 65 years

So reduce contacts with old age individuals

Signs and Symptoms

SYMPTOMS OF CORONAVIRUS DISEASE 2019

Patients with COVID-19 have experienced mild to severe respiratory illness.

Symptoms* can include

FEVER



*Symptoms may appear 2-14 days after exposure.

COUGH



SHORTNESS OF BREATH



Seek medical advice if you develop symptoms, and have been in close contact with a person known to have COVID-19 or if you live in or have recently been in an area with ongoing spread of COVID-19.

