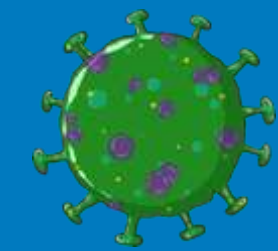
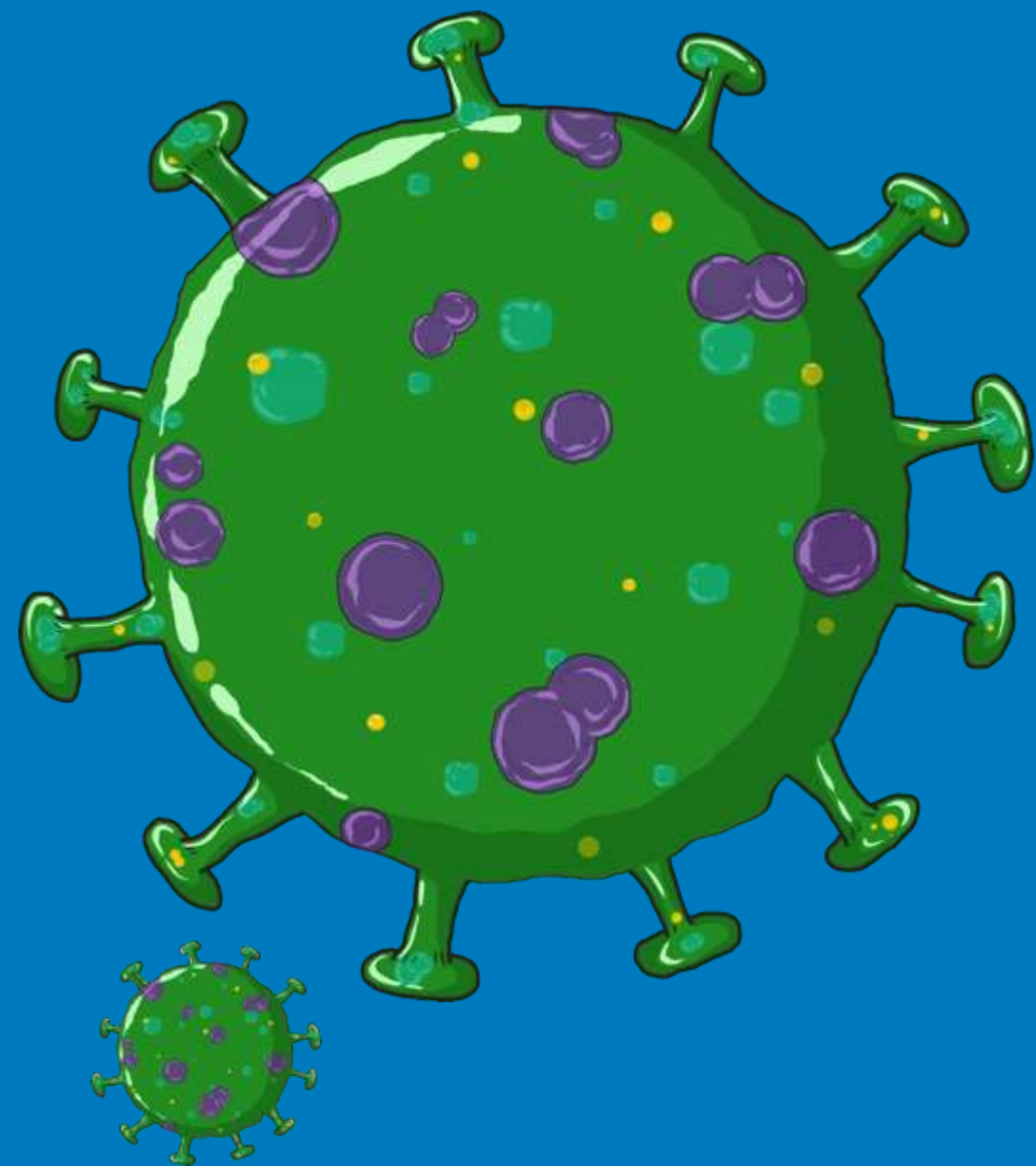




Ministry of Health & Family Welfare
Government of India



COVID-19

ROLE OF FLW

TRAINING OF ANM, ASHA, AWW





SESSION 2

Role of Frontline Workers

ROLE OF ANM, ASHA & AWW

HEALTH - ANM UNDER GUIDANCE OF DSO/MO

- Provide information
 - (a) Preventive and control measures including social distancing during the phases of the COVID outbreak
 - (b) Addressing myths and misconceptions;
- Support DSO on
 - (a) Contact tracing as per SOPs
 - (b) Link public health (home quarantine, home care, and supportive services for HRG and probable cases) in urban and rural areas &
 - (c) Psychosocial care and discrimination stigma and discrimination.
- Reporting and feedback across different phases of COVID-19 pandemic (no cases, imported/sporadic cases, clusters and community wide transmission)
- Personal Safety and Precautions
- Supervision of effective usage COVID-19 IEC materials

HEALTH-ASHA, CHV(IN URBAN AREAS) AND ICDS –AWW, UNDER GUIDANCE OF ASHA FACILITATOR & CDPO

- Community awareness through inter-personal communication
 - (a) Uptake of preventive and control measures including social distancing
 - (b) Addressing myths and misconceptions;
- Support ANM/Supervisor in house to house surveillance including
 - (a) Identification of HRG and probable cases
 - (b) Ensure uptake of medical services in urban and rural areas and
 - (c) Psychosocial care, stigma and discrimination
- Reporting and feedback across different phases of COVID-19 pandemic (no cases, imported/sporadic cases, clusters and community wide transmission)
- Personal Safety and Precautions
- Use of COVID 19 IEC materials

LET US UNDERSTAND ABOUT COVID-19

COVID-19 IS CORONAVIRUS DISEASE-2019



IT IS CAUSED BY A CORONAVIRUS NAMED AS SARS-CoV-2

WHAT ARE THE COMMON SYMPTOMS OF COVID-19



THE SYMPTOMS OF COVID-19 ARE FEVER, COUGH, AND DIFFICULTY IN BREATHING

IF YOU HAVE THESE AND YOU ARE A CONTACT OF A LABORATORY CONFIRMED POSITIVE CASE IMMEDIATELY CALL THE STATE HELPLINE NUMBER OR MINISTRY OF HEALTH & FAMILY WELFARE, GOVERNMENT OF INDIA 24X7 HELPLINE 011-2397 8046, 1075 OR YOUR ASHA/ANM.

